

# Operator Display Station



Provides machine operators the critical information they *demand*

## OPERATOR DISPLAY STATION

**How It Works:** Using Kar-Tech's standard interface, our display units are programmed to textually or graphically display any data that can be collected, and allow the operator to make control decisions when interfaced with Kar-Tech control solutions.

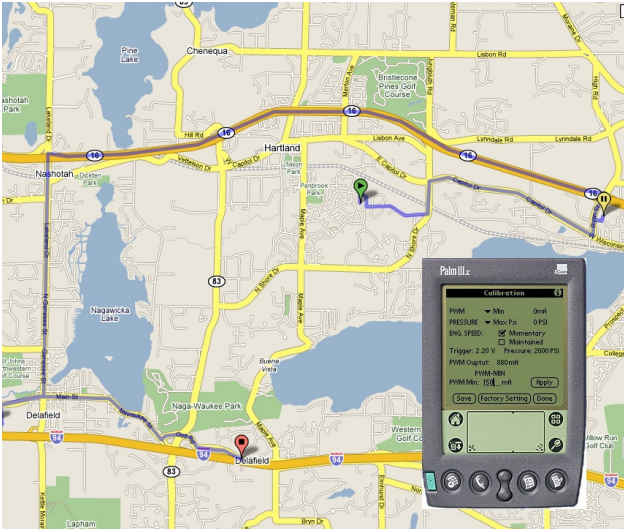
**Why Use It?:** Display stations can be used to have a local station to control machine functions, to put critical machine and CAN bus information in the immediate reach of the operator, and to provide a graphical element to accentuate textual data. Safety and productivity are key.

**Typical Applications:** Operator display stations are typically used in machine control applications where a control station local to the machine is necessary, or where data needs to be presented to the machine operator in a specific fashion. These units also excel as diagnostic tools. Operator display stations are used in applications such as cranes, refuse equipment, fire trucks, bark blowers, aircraft de-icers, directional drills, compacting equipment and many other applications.

**Customizable Layout:** Kar-Tech has a long history of building rugged control solutions and can help customize the design of your display station enclosure and interface.

**Diagnostic Display:** Operator display stations allow the user to know when an error occurs, and have the capability to provide detailed drawings and instructions to the operator to enable them to fix the errors. *Downtime is expensive.*

# Remote Diagnostics



- Cellular link to your machine in the field for complete diagnostics from your office – *just dial in your machine's phone number to see what it's doing in real-time.*
- Troubleshoot end-user issues without flying technicians cross-country or taking machines out of service to be returned for repair
- Can be used to take control or prevent operation in a leasing/non-payment situation
- GPS tracking available as an option.

**Latest in machine control technology provides a cost-effective, reliable solution for remote machine diagnostics and control**

## REMOTE DIAGNOSTIC SYSTEM

**How It Works:** Kar-Tech's remote diagnostic system is a cellular telephony module that, once installed on a machine, allows a user to dial into the machine from any telephone, using a PDA or PC. Once connected, the operator receives diagnostic information, and can optionally receive GPS information or take control of the machine remotely.

**Why Use It?:** The remote diagnostic system allows technicians to diagnose machines from the office, preventing costly service visits or machine returns. In leasing situations, the remote diagnostic system can be used to effectively shut a machine down for non-payment, etc.

**GPS:** The remote diagnostic system, as well, can send GPS information back to the user to facilitate fleet tracking, route logging, and any other data as necessary.

**Typical Applications:** Remote diagnostic systems are typically used in higher-end mobile hydraulic equipment such as concrete pumpers, rock drills, seismic thumpers, large cranes, etc. Having such a machine returned for service is costly; being able to diagnose problems from a home office affords significant cost savings.